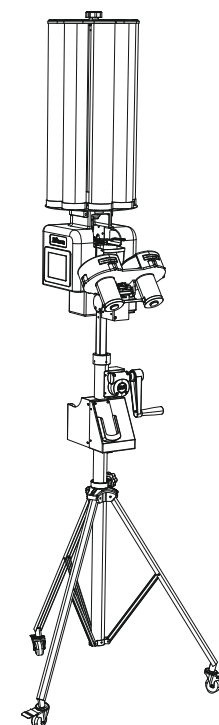


# User manual



Rev 1.0



## Intelligent Badminton Equipment

**Model:SS-B7**

### APP Download Code

#### 1 Android



(If the QR code scanning is abnormal, please visit the company's official website to download)

#### 2 IOS



APP Store

"APP Store" Input "SS-Link"

SS-Link



Siboasi official Wechat

DONGGUAN SIBOASI Sports Goods Technology Co.,Ltd

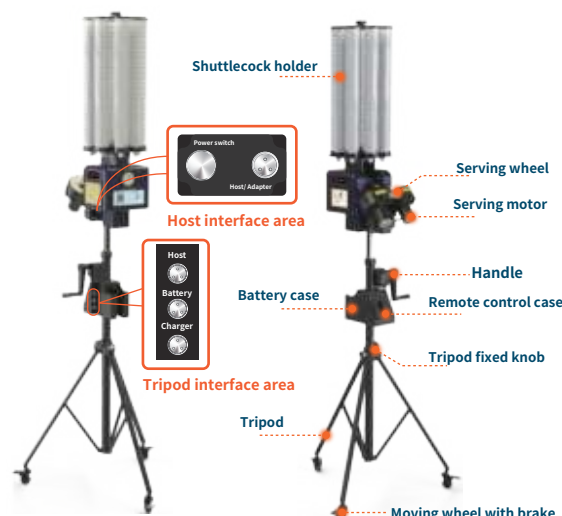
Tel : 0769-8226 2773

Website: [www.siboasi.com.cn](http://www.siboasi.com.cn)

Eamil: [ss@siboasi.com.cn](mailto:ss@siboasi.com.cn)

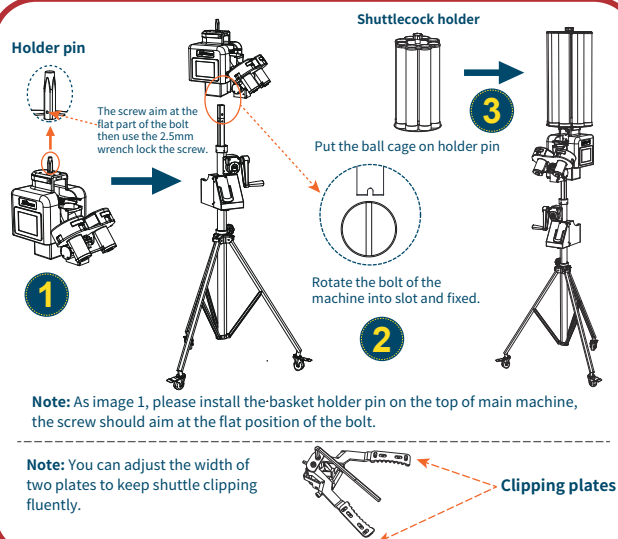
Address: No. 16, Fuma 1st Road, Chigang,  
Humen Town, Dongguan, Guangdong, China

## 1 Product Structure



**!** Charger is only used for charging, do not use it as a power supply or adapter.

## 2 Product Installation



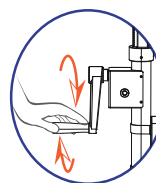
## 3 Lift adjustment operating instructions

### Lift adjustment operating

1

#### Rise operation

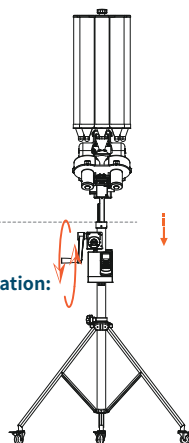
turn the handle clockwise



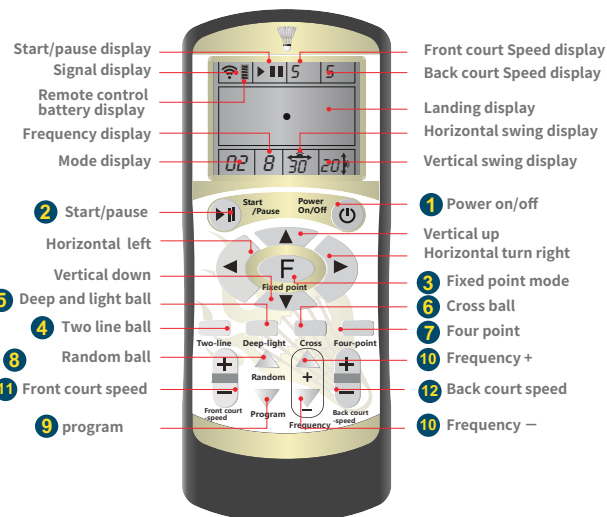
2

#### Descending operation:

turn the handle counterclockwise



## 4 Remote Control Button instructions



**Note:** please long press the power switch for 6S to initialization of remote controller Automatically within 30S after the machine is power up. any operation is invalid if the remoter without initialized, the maximum of 16 remoters can be matched.

## 5 Remote control introduction

**1. Power button:** Long press switch button for 3s to start, 3s to turn off.

**2. Start/Pause button:** Press once for pause, once again for re-work.

**3. Fixed mode F button:**

- (1) Press "F" button to enter into fixed point mode, 1 default point;
- (2) Long press F button for 8 seconds to restore the parameters as the factory's original settings.

**4. Two-line:** Short press the "Two-line" button on the remote control. Press once: narrow two-line ball; press twice: medium two-line ball; press three times: wide two-line ball (note: horizontal angles are not adjustable).

**5. Deep-light:** Short press the "Deep-light" button on the remote control, vertical deep-light ball. (Note: Vertical angles cannot be adjusted.)

**6. Cross:** Short press the "Cross" button on the remote control. The first press: medium shallow left deep ball; the second press: medium deep left shallow ball; the third press: medium deep right shallow ball; the fourth press: medium shallow ball and right deep ball; the fifth press: left deep ball and right shallow ball; the sixth press: left shallow ball and right deep ball.

**7. Four-point:** Short press the "Four-point" button on the remote control. Press once: medium square ball; press twice: wide square ball.

**8. Random:** Short press the "Random" button on the remote control, press once: seven points random serve horizontally; press twice: 21 points random serve in the whole court (Note: ① Horizontal random: the horizontal angles cannot be adjusted; ② Random in the whole court: both horizontal and vertical angles cannot be adjusted).

**9. Program:** (1) Short press the "Program" button on the remote control to switch to the default 10 sets of programming settings. The serving speed and ball frequency can be adjusted. (2) Long press the "Program" button on the remote control to enter the custom programming mode, and you can program the 21 landing points in the court at will. Press the "▲▼◀▶" key to move the landing point position. Press the "F" key to confirm. Press again to increase the number of single landing points (up to 10 balls). Long press the "F" key for 3 seconds to cancel the current single drop point. Long press the "Program" button to save and exit the programming mode.

**10. Frequency +/-:** adjust the ball interval time. (1-9 gears adjustable for fixed-point balls and two-line balls, and 1-6 gears adjustable for other modes.)

**11. Front-court speed +/-:** adjust the front-court serve speed, 1-3 gears adjustable.

**12. Back-court speed +/-:** adjust the backcourt serve speed, 3-5 gears adjustable.

## 6 APP Introduction

1. Download and install "SS-Link" APP.  
(Note: Scan the QR code on the manual to download and install.)
2. Turn on the bluetooth.
3. Open "SS-Link", it would scan the current available devices automatically. (See Picture 1,2)
4. Click "Badminton B7" to connect with machine, it will enter to APP operation page. (See Picture 3)
5. Select the serving mode, the machine starts to run, and then set the frequency, speed and other parameters of this mode.



Picture 1



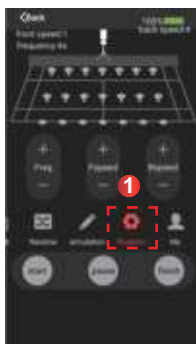
Picture 2



Picture 3

### 6.Programming mode operation steps

- ① Point "Program", enter the self-defined programming name, then point "OK". ( See Picture 4,5)
- ② Then click " " on the screen to select the landing point, select the number of serves at this landing point (the number of serves can be 1-10), and then click "Save program" (See Picture 6,7)



Picture 4

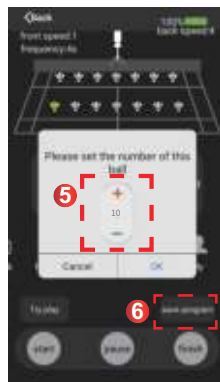


Picture 5



Picture 6

- ③ In "My Archive" ->click on the newly saved program "MODE", then set the speed and frequency, click the "Start" button, and the device will start working .(See Picture 8)



Picture 7



Picture 8

- ④ View custom programming in "My Archive", modify and delete custom programming .(See Picture 9)
- ⑤ Click the "Finish" button to exit the operation interface.



Picture 9

## 7 Product parameters

|                 |                        |                        |               |
|-----------------|------------------------|------------------------|---------------|
| Power           | 230W                   | Product color          | Black/Red     |
| Power supply    | 100-240V AC 50/60Hz    | Frequencny             | 0.75-7 s/ball |
| Capacity        | 200pcs                 | Battery                | 24V, 8AH      |
| Elevation angle | -15°~35°(±5)           | Horizontal angle       | 70°(±5)       |
| Lifting         | 0-71cm can be adjusted | Shooting window height | 142-213cm     |
| Product weight  | 26kg                   | Product size           | 122x103x300cm |

## 8 Parts list(Standard)

|                                      |  |
|--------------------------------------|--|
| 1.Remote control 1PC                 | 2.One pair of battery for remote control |
| 3.Battery 1PC                        | 4.DC cord 1 PC                           |
| 5.Square pin of shuttles holder 1 PC | 6.Charger 1 SET                          |
| 7.Tripod 1 PC                        | 8.Shuttles holder 1 PC                   |
| 9.Allen wrench 2 PCS                 | 10. Spanner 1PC                          |
| 11.User manual 1PC                   | 12. Warranty 1PC                         |



- ▲ Do not repair the machine or change the machine parts at will, otherwise the machine will be damaged or serious accidents will be caused.
- ▲ Do not use wet balls or damaged balls, otherwise the machine will get stuck or damage the machine.
- ▲ If hit the ball into the machine accidentally, turn off the power right away and then take out the ball.
- ▲ It is forbidden to stand at the ball outlet when the machine is working.
- ▲ Do not move the machine while it is working.
- ▲ It is forbidden to touch the inside of the machine by hand to avoid accidents.
- ▲ Be sure to cut off the power when cleaning the machine, otherwise maybe cause danger.
- ▲ Minors are strictly prohibited from operating the machine without permission to avoid endangering personal safety and damaging the machine.
- ▲ It is forbidden to tear up the machine bar code.

**Caution:**

**If maintenance is required,  
please contact manufacturer**



- 1.** Batteries are classified as dangerous goods. Do not let minors use them. It is strictly prohibited to drop, throw, impact, crush, puncture, or short-circuit the positive and negative poles of the battery, in order to avoid serious safety hazards such as fire or explosion.
- 2.** Do not transport, store, or use devices in high temperature or humid environments, otherwise it will damage the battery. Using or charging the battery in an environment above 50°C can also pose safety hazards.
- 3.** Use the dedicated charger provided with the device for charging. Using an incompatible charger can damage the battery's lifespan. Charge the device in a spacious area without flammable or foreign objects nearby. Continuous charging should not exceed 24 hours.
- 4.** After the battery is discharged, it should be charged promptly or within 24 hours. If the device is not used for a long time, charge the battery at least once every 6 months, otherwise it will shorten the battery life or cause damage that prevents charging.
- 5.** Batteries must be scrapped after 5 years of use or storage. Otherwise, there may be serious safety hazards such as spontaneous combustion or explosion during storage, use or charging. Dispose of batteries that have been used for more than 5 years according to the local hazardous materials disposal process.

| FAQ                                | Cause  | Solution   |
|------------------------------------|--|--|
| Not start                          | Power cable is broken or not inserted tightly.   | Change or insert again.  |
| Serving two more shuttles together | 1. Two shuttles stick together.<br>2. Shuttles are damaged.  | 1. Separate the shuttles.<br>2. Change the new shuttles.                                       |
| Ball Jammed                        | 1. The holder or shuttles not in the right place.<br>2. Shuttles are damaged.<br>3. The tracking chain is stuck. | 1. Replace the holder and shuttles.<br>2. Change the shuttles.<br>3. Clean the tracking chain. |
| Holder not rotating                | The frequency sensor cannot be inducted  | Clean the sensor   |
| Shuttles cannot be picked up       | 1. The material or divergence of shuttles are different<br>2. The frequency sensor cannot be inducted            | 1. Adjust the distance of metal plate<br>2. Clean the sensor                                   |

**Note:** 1. The equipment is with two wheels to rotate and squeeze to shoot out the ball, so would slightly wear the ball, which is normal.  
2. The dropping point would slightly deviated if the quality of the ball is different and the position of the machine is different.